

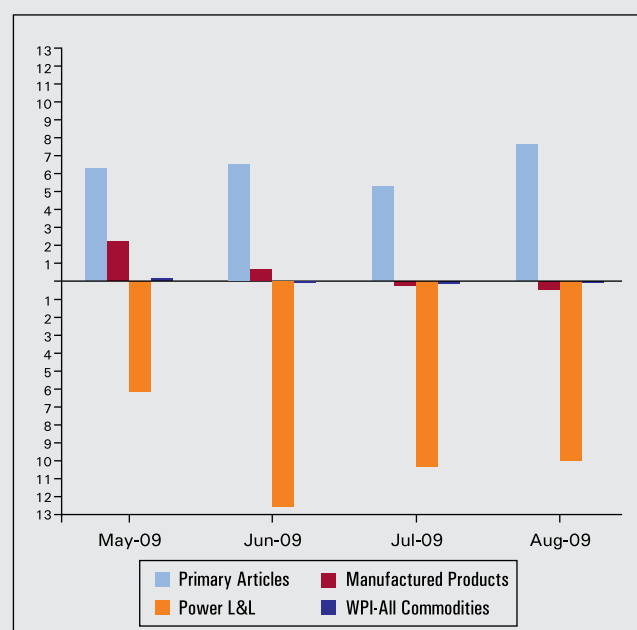
INDIA AT A GLANCE

Select Economic Indicators

AREA & POPULATION

Area	3,287,590 sq km
Population	1.028 bn
Males	532,223,090
Females	496,514,346
Population density	342 per sq km
Urban population	308 mn

INFLATION (in %)



EXTERNAL SECTOR

	May-09	Jun-09	Jul-09	Aug-09
Exports US\$*	-29.2	-27.73	-28.44	-19.38
Imports US\$*	-39.2	-29.34	-37.09	-32.38

* Growth year-on-year %

MARKETS##

	May-09	Jun-09	Jul-09	Aug-09
BSE SENSEX##	13046.1	14782.5	14635.2	15414.7
CNX-NIFTY##	3958.0	4436.4	4343.1	4571.1
P/E	17.9	19.7	19.1	20.1

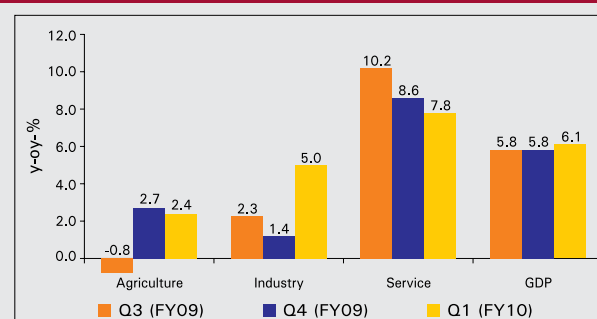
Index value

EXCHANGE RATE###

	Oct-08	Nov-08	Dec-08	Jan-09	Feb-09	Mar-09	Apr-09	May-09	Jun-09	Jul-09	Aug-09
INR/US\$	48.6	49.0	48.6	48.8	49.2	51.2	50.1	48.5	47.8	48.5	48.3
INR/GBP	82.6	75.3	72.6	70.8	70.9	72.9	73.6	74.8	78.2	79.3	80.0
INR/100YEN	48.6	50.5	53.3	54.0	53.4	52.5	50.8	50.2	49.5	51.3	51.0
INR/EURO	64.8	62.4	65.7	65.1	63.0	66.9	65.9	66.2	67.0	68.3	69.0
INR/Yuan	7.1	7.2	7.1	7.1	7.2	7.5	7.3	7.1	7.0	7.1	7.1

Monthly Averages

GDP growth data (y-o-y%)



INDUSTRIAL PRODUCTION* May-09 Jun-09 Jul-09 Aug-09

General	2.1	8.2	7.2	10.4
Manufacturing	1.8	7.8	7.4	10.2
Mining	3.4	14.2	9.0	12.9
Electricity	3.3	8.0	4.2	10.6
Basic Goods	3.8	10.6	4.7	10.0
Capital Goods	-3.6	13.3	1.7	8.3
Intermediate Goods	6.6	7.6	9.8	14.3
Consumer goods	-1.1	4.4	9.8	8.5
Consumer Durables	13.2	16.1	21.3	22.3
Consumer Non-Durables	-5.5	0.7	5.8	3.7

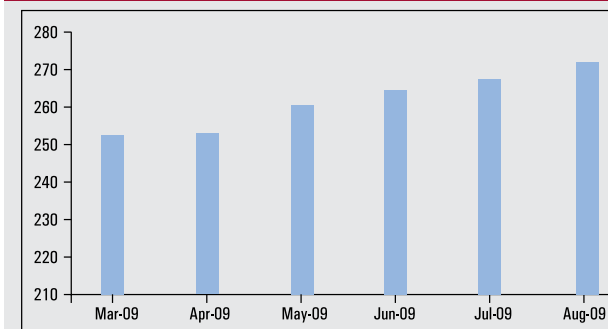
* Growth in per cent year-on-year

INFLATION* May-09 Jun-09 Jul-09 Aug-09

WPI-Primary Articles	6.32	6.51	5.31	7.59
WPI-Manufactured Products	2.18	0.64	-0.23	-0.44
WPI-Fuel, Power L&L#	-6.14	-12.53	-10.31	-9.83
WPI-All Commodities	1.38	-1.02	-1.24	-0.70

* In per cent year-on-year; ** Average till August 15, 2009 ; WPI - Wholesale Price Index; #L&L - Light and Lubricants

FOREX RESERVES#

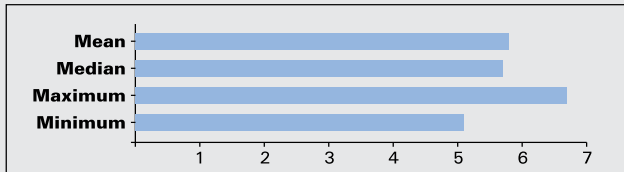


US Billion Dollars

Growth Outlook (in %): 2009-10

	Mean	Median	Maximum	Minimum
GDP Growth	6.5	6.5	7.5	5.8
Agriculture	2.1	2.5	3.6	-2.9
Industry	4.8	4.8	6.1	4.0
Services	8.3	8.3	10.0	7.2

Source: RBI Survey of Professional Forecasters, Eighth Round : Q1: 2009-10



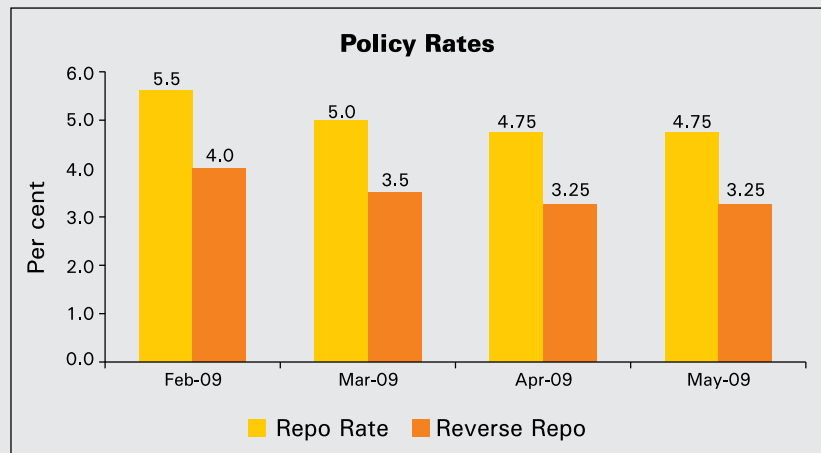
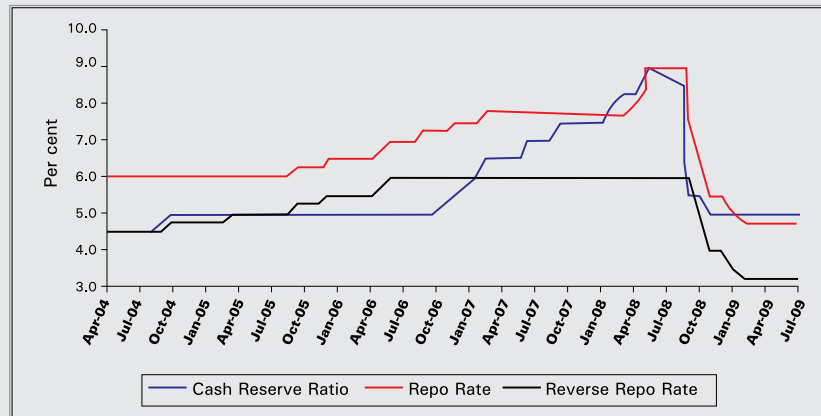
FOREIGN INVESTMENT

	2009-10(P)		
	Jun-09	Jul-09	Aug-09
Direct Investment	2.6	3.5	3.3
Portfolio Investment of which	0.35	2.077	0.926
GDRs/ADRs	0.01	0.01	0.955
Net Fills	0.3	2.067	-0.029
Total	2.9	5.6	4.2

Source: RBI
(P)= Provisional, All figures in US\$ billion

INTEREST RATE CYCLE

	Cash Reserve Ratio	Repo Rate	Reverse Repo Rate
Apr-04	4.5	6	4.5
Jul-04	4.5	6	4.5
Oct-04	5	6	4.75
Jan-05	5	6	4.75
Apr-05	5	6	5
Jul-05	5	6	5
Oct-05	5	6.25	5.25
Jan-06	5	6.5	5.5
Apr-06	5	6.5	5.5
Jul-06	5	7	6
Oct-06	5	7.25	6
Jan-07	5.5	7.5	6
Apr-07	6.5	7.75	6
Jul-07	6.5	7.75	6
Oct-07	7	7.75	6
Jan-08	7.5	7.75	6
Apr-08	8	7.75	6
Jul-08	9.0	9	6
Oct-08	6.5	8	6
Nov-08	5.5	7.5	6
Dec-08	5.5	6.5	5
Jan-09	5.0	5.5	4
Feb-09	5.0	5.5	4.0
Mar-09	5.0	5.0	3.5
Apr-09	5.0	4.75	3.25
May-09	5.0	4.75	3.25
Jun-09	5.0	4.75	3.25
Jul-09	5.0	4.75	3.25
Aug-09	5.0	4.75	3.25
Sep-09	5.0	4.75	3.25



Source: RBI

INTEREST RATES	Nov-08	Dec-08	Jan-09	Feb-09	Mar-09	Apr-09	May-09	Jun-09	Jul-09	Aug-09
PLR (Per cent)	13.19-13.63	12.5-13.25	12.0-12.5	11.5-12.5	11.5-12.5	11.5-12.31	11.0-12.25	11.0-12.25	11.0-12.0	11.0-12.0
1 Year Gol Paper (Per cent)###	5.4	5.7	3.2	3.9	2.7	2.7	1.8	3.4	3.2	3.3
10Year Gol Paper (Per cent) ###	7.5	6.1	5.7	6.1	6.5	6.5	6.5	6.2	5.3	7.2

Monthly Averages

Source: CRISIL, India's leading ratings, research, risk and policy advisory company (www.crisil.com). For detailed analysis, trends and outlook on the Indian economy and to subscribe to the CRISIL EcoView, please write to info@crisil.com.