

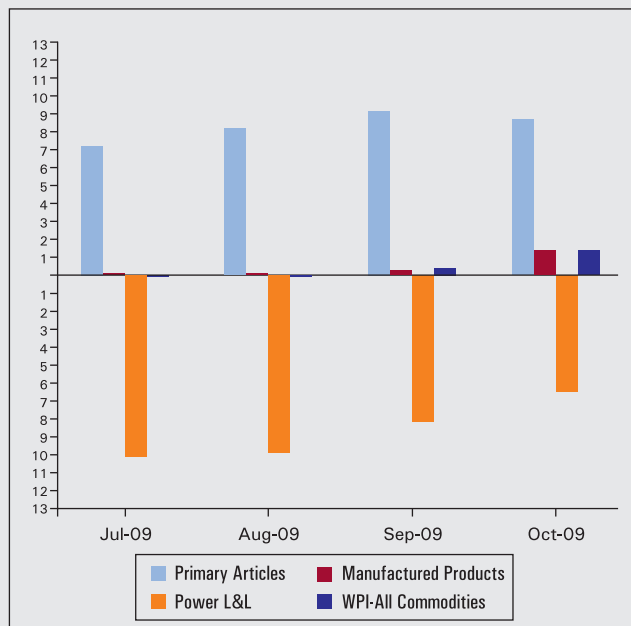
INDIA AT A GLANCE

Select Economic Indicators

AREA & POPULATION

Area	3,287,590 sq km
Population	1.028 bn
Males	532,223,090
Females	496,514,346
Population density	342 per sq km
Urban population	308 mn

INFLATION (in %)



EXTERNAL SECTOR

	Jul-09	Aug-09	Sep-09	Oct-09
Exports US\$*	-28.44	-19.38	-13.81	-6.64
Imports US\$*	-37.09	-32.38	-31.34	-14.98

* Growth year-on-year %

MARKETS##

	Aug-09	Sep-09	Oct-09	Nov-09
BSE SENSEX##	15414.7	16338.5	16825.7	16684.3
CNX-NIFTY##	4571.1	4859.3	4994.1	4953.5
P/E	20.1	21.2	21.7	21.2

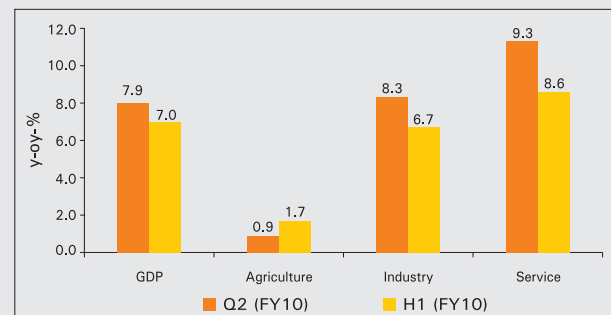
Index value

EXCHANGE RATE###

	Dec-08	Jan-09	Feb-09	Mar-09	Apr-09	May-09	Jun-09	Jul-09	Aug-09	Sep-09	Oct-09	Nov-09
INR/US\$	48.6	48.8	49.2	51.2	50.1	48.5	47.8	48.5	48.3	48.4	46.7	46.6
INR/GBP	72.6	70.8	70.9	72.9	73.6	74.8	78.2	79.3	80.0	79.4	75.7	77.4
INR/100YEN	53.3	54.0	53.4	52.5	50.8	50.2	49.5	51.3	51.0	52.9	51.8	52.3
INR/EURO	65.7	65.1	63.0	66.9	65.9	66.2	67.0	68.3	69.0	70.5	69.3	69.5
INR/Yuan	7.1	7.1	7.2	7.5	7.3	7.1	7.0	7.1	7.1	7.1	6.8	6.8

Monthly Averages

GDP growth data (y-o-y%)



INDUSTRIAL PRODUCTION* Jun-09 Jul-09 Aug-09 Sep-09

General	8.3	7.2	11.0	9.1
Manufacturing	8.0	7.4	11.0	9.3
Mining	14.2	9.0	11.0	8.6
Electricity	8.0	4.2	10.6	7.9
Basic Goods	10.7	4.7	9.6	6.7
Capital Goods	13.4	1.7	8.7	12.8
Intermediate Goods	7.9	9.8	14.2	10.8
Consumer Goods	4.4	9.8	10.5	8.2
Consumer Durables	16.2	21.3	22.3	22.2
Consumer Non-Durables	0.7	5.8	6.4	2.6

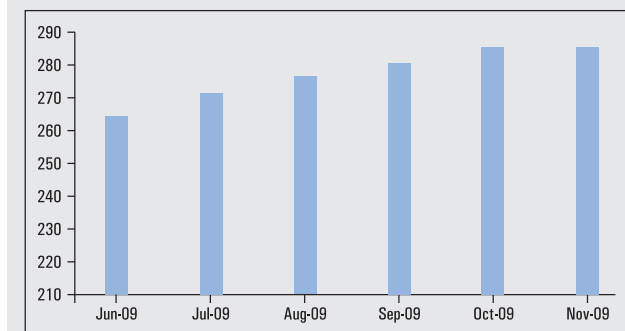
* Growth in per cent year-on-year

INFLATION* Jul-09 Aug-09 Sep-09 Oct-09

WPI-Primary Articles	7.20	7.98	9.36	8.71
WPI-Manufactured Products	0.05	0.10	0.29	1.36
WPI-Fuel, Power L&L#	-10.34	-9.26	-8.18	-6.55
WPI-All Commodities	-0.67	-0.17	0.50	1.34

* In per cent year-on-year; WPI - Wholesale Price Index; #L&L - Light and Lubricants

FOREX RESERVES#

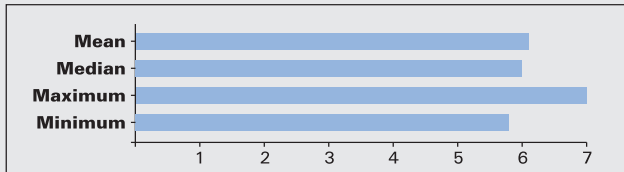


US Billion Dollars

Growth Outlook (in %): 2009-10

	Mean	Median	Maximum	Minimum
GDP Growth	6.1	6.0	7.0	5.8
Agriculture	-1.7	-1.4	0.6	-5.7
Industry	6.6	6.3	8.3	5.5
Services	8.2	8.1	9.1	7.2

Source: RBI Survey of Professional Forecasters, Eighth Round : Q2: 2009-10



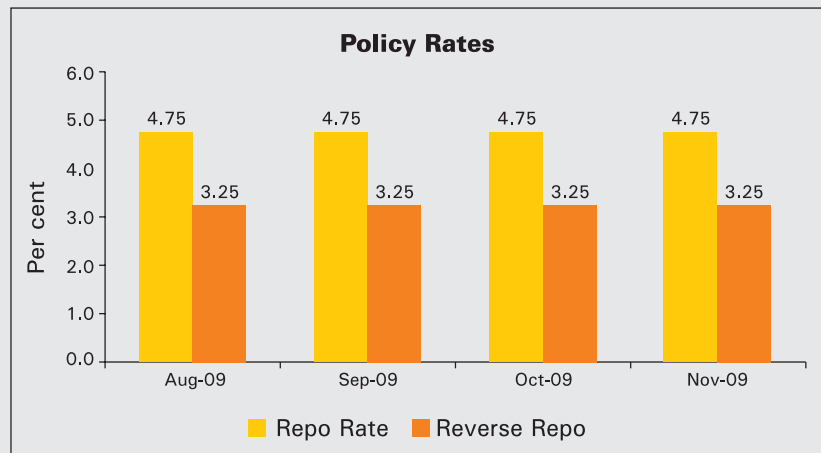
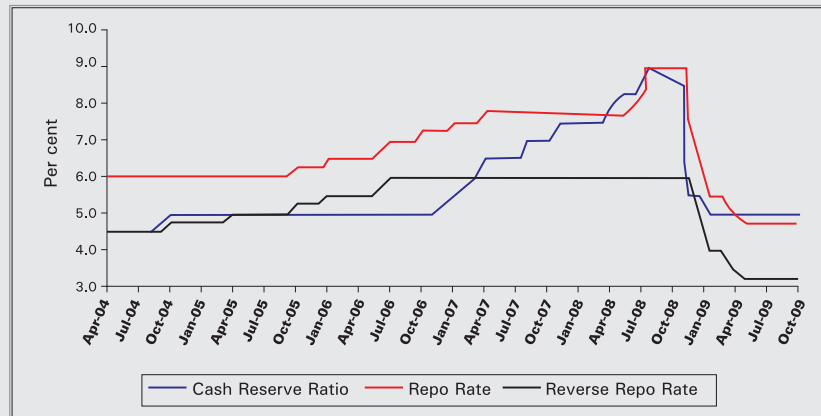
FOREIGN INVESTMENT

	2008-09 (P)	2009-10 (P)
Direct Investment	35.1	19.9
Portfolio Investment of which	-13.8	20.8
GDRs/ADRs	1.1	2.7
Net Flls	-15.0	18.1
Total	21.3	40.8

Source: RBI
(P) = Provisional, All figures in US\$ billion

INTEREST RATE CYCLE

	Cash Reserve Ratio	Repo Rate	Reverse Repo Rate
Apr-04	4.5	6	4.5
Jul-04	4.5	6	4.5
Oct-04	5	6	4.75
Jan-05	5	6	4.75
Apr-05	5	6	5
Jul-05	5	6	5
Oct-05	5	6.25	5.25
Jan-06	5	6.5	5.5
Apr-06	5	6.5	5.5
Jul-06	5	7	6
Oct-06	5	7.25	6
Jan-07	5.5	7.5	6
Apr-07	6.5	7.75	6
Jul-07	6.5	7.75	6
Oct-07	7	7.75	6
Jan-08	7.5	7.75	6
Apr-08	8	7.75	6
Jul-08	9.0	9	6
Oct-08	6.5	8	6
Nov-08	5.5	7.5	6
Dec-08	5.5	6.5	5
Jan-09	5.0	5.5	4
Feb-09	5.0	5.5	4.0
Mar-09	5.0	5.0	3.5
Apr-09	5.0	4.75	3.25
May-09	5.0	4.75	3.25
Jun-09	5.0	4.75	3.25
Jul-09	5.0	4.75	3.25
Aug-09	5.0	4.75	3.25
Sep-09	5.0	4.75	3.25
Oct-09	5.0	4.75	3.25
Nov-09	5.0	4.75	3.25



Source: RBI

INTEREST RATES	Dec-08	Jan-09	Feb-09	Mar-09	Apr-09	May-09	Jun-09	Jul-09	Aug-09	Sep-09	Oct-09	Nov-09
PLR (Per cent)	12.5-13.25	12.0-12.5	11.5-12.5	11.5-12.5	11.5-12.31	11.0-12.25	11.0-12.25	11.0-12.0	11.0-12.0	11.0-12.0	11.0-12.0	11.0-12.0**
1 Year Gol Paper (Per cent)	5.7	3.2	3.9	4.2	5.1	4.0	4.0	3.7	3.9	3.8	3.3	3.2
10Year Gol Paper (Per cent)	6.1	5.7	6.1	6.5	6.5	6.5	6.2	6.8	7.2	7.3	7.3	7.3

**Average till November 13, 2009

Source: CRISIL, India's leading ratings, research, risk and policy advisory company (www.crisil.com). For detailed analysis, trends and outlook on the Indian economy and to subscribe to the CRISIL EcoView, please write to info@crisil.com.