

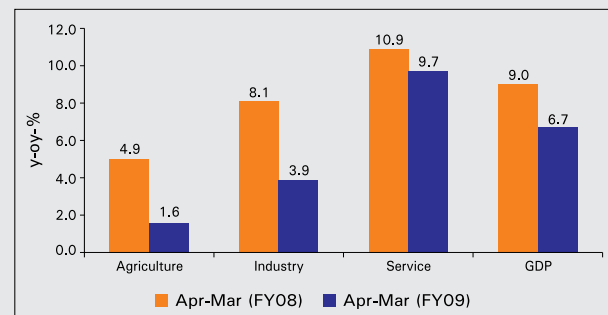
INDIA AT A GLANCE

Select Economic Indicators

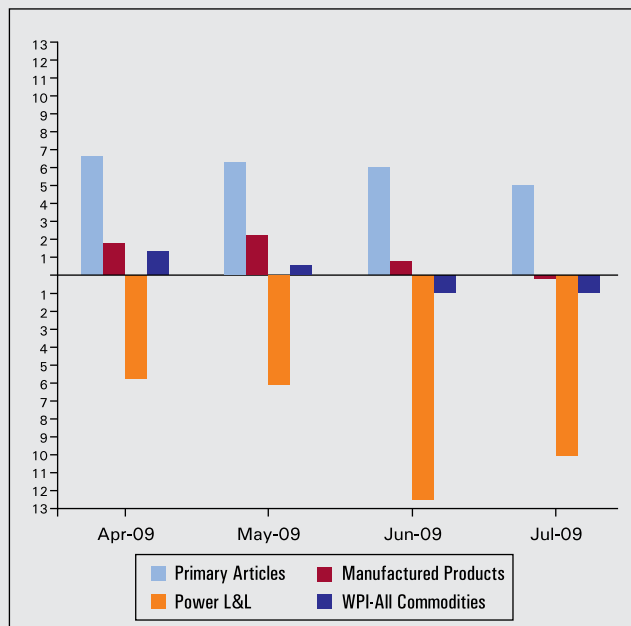
AREA & POPULATION

Area	3,287,590 sq km
Population	1.028 bn
Males	532,223,090
Females	496,514,346
Population density	342 per sq km
Urban population	308 mn

GDP growth data (y-o-y%)



INFLATION (in %)



INDUSTRIAL PRODUCTION* Mar-09 Apr-09 May-09 Jun-09

General	0.3	1.2	2.2	7.8
Manufacturing	-0.3	0.4	2.0	7.3
Mining	1.9	3.9	3.3	15.4
Electricity	6.3	7.1	3.3	8.0
Basic Goods	1.9	4.7	3.8	10.1
Capital Goods	-6.3	-7.3	-3.4	11.8
Intermediate Goods	1.9	7.3	6.4	7.9
Consumer goods	1.3	-3.6	-0.4	4.0
Consumer Durables	8.4	17.2	12.5	15.5
Consumer Non-Durables	-1.0	-9.1	-4.3	0.3

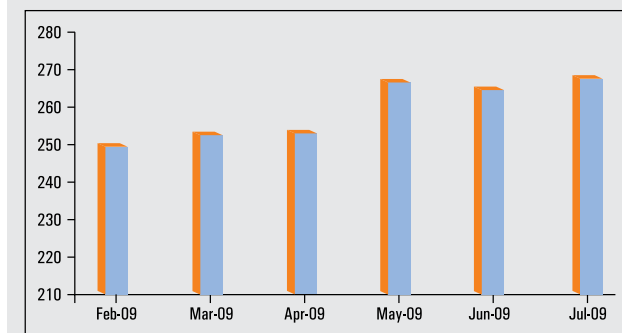
* Growth in per cent year-on-year

INFLATION* Apr-09 May-09 Jun-09 Jul-09

WPI-Primary Articles	6.62	6.32	5.99	4.91
WPI-Manufactured Products	1.75	2.18	0.64	-0.22
WPI-Fuel, Power L&L#	-5.69	-6.14	-12.53	-10.32
WPI-All Commodities	1.31	1.38	-1.14	-1.33

* In per cent year-on-year; ** Average till August 15, 2009 ; WPI - Wholesale Price Index; #L&L - Light and Lubricants

FOREX RESERVES#



US Billion Dollars

EXTERNAL SECTOR Apr-09 May-09 Jun-09 Jul-09

Exports US\$*	-33.2	-29.2	-27.73	-28.44
Imports US\$*	-36.6	-39.2	-29.34	-37.09

* Growth year-on-year %

MARKETS## Feb-09 Mar-09 Apr-09 May-09

BSE SENSEX##	13046.1	14782.5	14635.2	15414.7
CNX-NIFTY##	3958.0	4436.4	4343.1	4571.1
P/E	3958.0	4436.4	4343.1	4571.1

Index value

EXCHANGE RATE### Sep-09 Oct-08 Nov-08 Dec-08 Jan-09 Feb-09 Mar-09 Apr-09 May-09 Jun-09 Jul-09

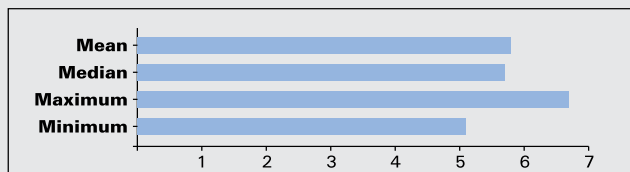
INR/US\$	45.6	48.6	49.0	48.6	48.8	49.2	51.2	50.1	48.5	47.8	48.5
INR/GBP	82.1	82.6	75.3	72.6	70.8	70.9	72.9	73.6	74.8	78.2	79.3
INR/100YEN	42.7	48.6	50.5	53.3	54.0	53.4	52.5	50.8	50.2	49.5	51.3
INR/EURO	65.6	64.8	62.4	65.7	65.1	63.0	66.9	65.9	66.2	67.0	68.3
INR/Yuan	6.7	7.1	7.2	7.1	7.1	7.2	7.5	7.3	7.1	7.0	7.1

Monthly Averages

Growth Outlook (in %): 2009-10

	Mean	Median	Maximum	Minimum
GDP Growth	6.5	6.5	7.5	5.8
Agriculture	2.1	2.5	3.6	-2.9
Industry	4.8	4.8	6.1	4.0
Services	8.3	8.3	10.0	7.2

Source: RBI Survey of Professional Forecasters, Eighth Round : Q1: 2009-10



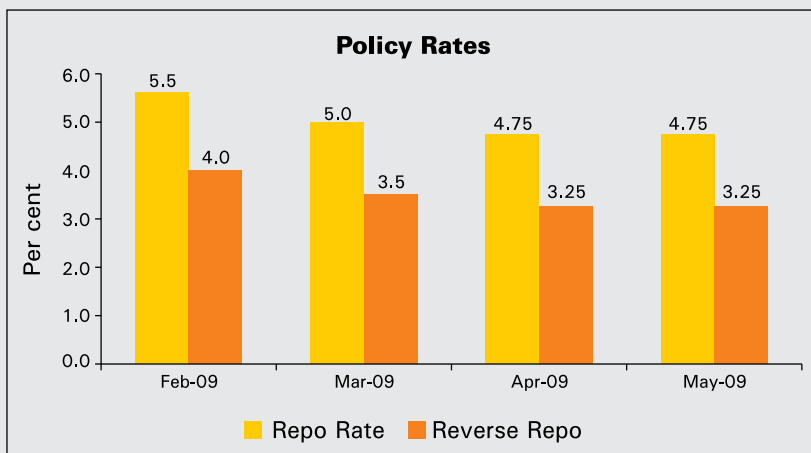
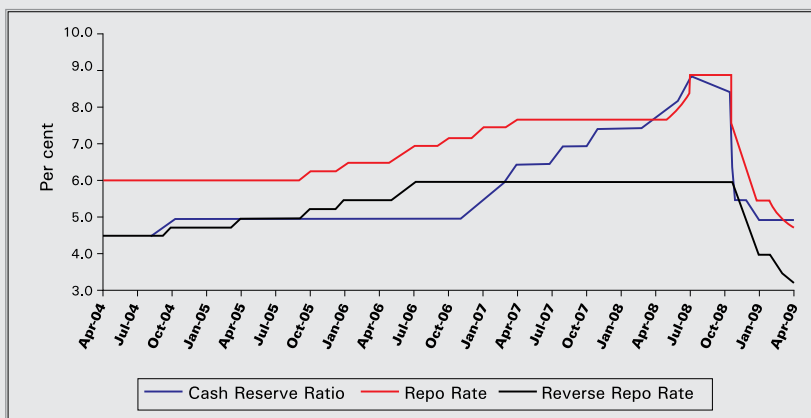
FOREIGN INVESTMENT

	2006-07	2007-08(P)	2008-09(P)
Direct Investment	22.8	34.3	33.6
Portfolio Investment of which	7.1	29.3	-13.8
GDRs/ADRs	3.8	8.8	1.2
Net Flls	3.2	20.3	-15.0
Total	29.8	63.7	19.7

Source: RBI
(P)= Provisional, All figures in US\$ billion

INTEREST RATE CYCLE

	Cash Reserve Ratio	Repo Rate	Reverse Repo Rate
Apr-04	4.5	6	4.5
Jul-04	4.5	6	4.5
Oct-04	5	6	4.75
Jan-05	5	6	4.75
Apr-05	5	6	5
Jul-05	5	6	5
Oct-05	5	6.25	5.25
Jan-06	5	6.5	5.5
Apr-06	5	6.5	5.5
Jul-06	5	7	6
Oct-06	5	7.25	6
Jan-07	5.5	7.5	6
Apr-07	6.5	7.75	6
Jul-07	6.5	7.75	6
Aug-07	7	7.75	6
Sep-07	7	7.75	6
Oct-07	7	7.75	6
Nov-07	7.5	7.75	6
Dec-07	7.5	7.75	6
Jan-08	7.5	7.75	6
Feb-08	7.5	7.75	6
Mar-08	7.5	7.75	6
Apr-08	8	7.75	6
May-08	8.25	7.75	6
Jun-08	8.25	8	6
Jul-08	8.75	8.5	6
Jul-08	9.0	9	6
Oct-08	8.5	9	6
Oct-08	7.5	9	6
Oct-08	6.5	9	6
Oct-08	6.5	8	6
Nov-08	5.5	7.5	6
Dec-08	5.5	6.5	5
Jan-09	5.0	5.5	4
Feb-09	5.0	5.5	4.0
Mar-09	5.0	5.0	3.5
Apr-09	5.0	4.75	3.25
May-09	5.0	4.75	3.25



Source: RBI

INTEREST RATES	Oct-08	Nov-08	Dec-08	Jan-09	Feb-09	Mar-09	Apr-09	May-09	Jun-09	Jul-09
PLR (Per cent)	13.75-14.00	13.19-13.63	12.5-13.25	12.0-12.5	11.5-12.5	11.5-12.5	11.5-12.31	11.0-12.25	11.0-12.25	11.0-12.0
1 Year Gol Paper (Per cent)###	7.8	5.4	5.7	3.2	3.9	2.7	2.7	1.8	3.4	3.2
10Year Gol Paper (Per cent) ###	7.5	7.5	6.1	5.7	6.1	6.5	6.5	6.5	6.2	5.3

Monthly Averages

Source: CRISIL, India's leading ratings, research, risk and policy advisory company (www.crisil.com). For detailed analysis, trends and outlook on the Indian economy and to subscribe to the CRISIL EcoView, please write to info@crisil.com.